

Water Safety at the River



DANGERS

Can you number the following dangers on the picture?

- 1 Watch out for things you may trip over
- 2 The water may be muddy and you could get stuck
- 3 Rescue equipment may be missing or broken
- 4 Safety signs give information to keep you safe
- 5 Wear a life jacket when on the water to help if you fall in
- 6 Currents can carry you away in seconds
- 7 Banks can have loose or slippery edges
- 8 Weeds or branches underwater can trap you
- 9 Rivers can be very cold which will limit your swimming skills
- 10 There may be rubbish or hidden objects beneath the surface

Always follow the
WATER SAFETY CODE



ROYAL
LIFE SAVING
SOCIETY UK

For more resources and advice visit www.rlss.org.uk



STOP
AND THINK



STAY
TOGETHER



CALL
999



FLOAT

Water Safety at the River

RIVER Water Safety Advice

SWIM at lifeguarded lakes

STAY back from the edge so that you don't fall in

REMEMBER that lakes and rivers remain cold all year round

ALWAYS wear a lifejacket for activities on or around the water

WORDSEARCH

X	B	I	T	R	E	C	B	H	K	O	S	A
C	A	N	A	L	T	N	S	R	F	W	E	N
R	N	A	O	H	G	U	J	M	I	P	U	T
F	K	E	B	V	O	A	U	J	S	D	C	R
S	S	I	G	N	S	D	Y	U	H	F	G	E
Q	U	R	S	N	D	B	F	H	I	L	A	E
U	I	T	K	Y	E	U	F	T	N	O	Y	S
A	H	F	R	E	E	Z	I	N	G	W	T	O
R	R	P	E	U	R	S	W	E	B	E	E	H
R	E	K	V	C	A	I	Q	R	K	R	F	S
Y	T	R	I	D	G	M	S	R	F	S	A	I
O	A	F	R	N	J	E	D	U	C	K	S	N
E	W	C	B	S	O	R	T	C	E	U	H	Z

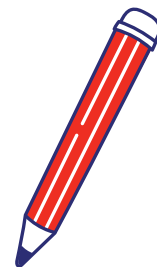
Can you find all these words in the grid?

RIVER
CANAL
FISHING
BANKS
DIRTY
QUARRY

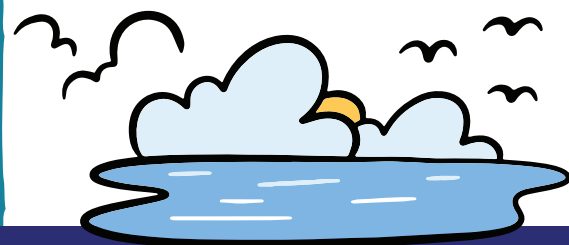
FREEZING
REEDS
CURRENT
DUCKS
BOAT
BRIDGE

MUDDY
SIGNS
TREES
WATER
FLOWERS
SAFETY

QUIZ



1. What number should you call if someone needs help?
2. What should you throw to help someone in trouble - a rubber duck, a life ring, your teacher or a brick?
3. What should you wear if you can't swim?
4. Why should you stay back from the water's edge?
5. You should never jump in to save someone in trouble, true or false?



Why not share your pieces of art with us?
Simply post with #enjoywatersafely.

    @rlssuk